



Cube Pro SOLAR Misting System Bluetooth- 55 gallon





BEFORE INSTALLATION

Pynamite Cube Pro systems are shipped with the negative (black) battery connector disconnected. Reattach the yellow connector to the negative F2 spade connector on the Battery before installation to begin charging the Battery. The system is also shipped with the drain valve cap removed. Hand-tighten it in place before filling the Cube. Do not discard the viton o-ring inside the cap.

GETTING STARTED - DOWNLOAD THE APP AND PAIR THE CONTROLLER

1. Press the POWER button on the Bluetooth controller, the light will illuminate green.
 2. Go to iPhone App store or Google Play Store, depending on your device. Type Pynamite Cube Bluetooth in the search bar.
 3. Download and then open the Pynamite Cube Bluetooth app.
- The App will be used:
- to set-up and configure the settings for the system
 - as the remote control
 - to update any future firmware or software updates

THE CONTROLLER

NOTE: Do not get the controller wet.

1. POWER - Press the Power button to turn the system ON or OFF. The green LED indicates the system is ON.

NOTE: The app default is 0 nozzles, the system will not mist until the controller is paired with the app and the nozzle count is increased to at least 1 nozzle in the Set Up screen.

2. VOLTAGE STATUS

- The Voltage Status light will illuminate green when connected to a 12v battery that has 12v or higher.
- The light will illuminate red if the battery voltage falls between 11.9v to 11.1v.
- If the voltage falls to 11v for 5 minutes the system will go into sleep mode and power down.
- Press the POWER button to wake the system. The system will go back to sleep mode after 5 minutes if the voltage has not reached 12v or higher.

3. MIST BUTTON

- Press the Mist button to initiate a mist. The default length is 45 seconds. Mist length is the same duration as remote control length and can be changed in the Set Up screen.
NOTE: The system will first agitate before it mists if agitation is turned on.
- Press and HOLD the Mist button for 5 seconds then release to initiate a 180 second Inspect cycle..
NOTE: The system will first agitate before it mists if agitation is turned on.

4. STOP MIST BUTTON

- Press the Stop Mist button to immediately stop a Mist.
- Press and HOLD the Stop button for 5 seconds until the Mist button LED flashes green 3 times to reset the liquid level indicator to 100%.
NOTE: You can also reset the liquid level indicator in the app Set Up screen.

5. PAIRING CODE - Code will be used to pair the system to the app.



BLUETOOTH CONNECTION SCREEN

This screen is used to manage connections and devices. Once the app is downloaded it will default to the Bluetooth Connection screen.

The Selected Device box will show the name of the device that the app is currently connected to. If no device is connected, the field will be blank.

- If asked to share your location press **“Only When Using”** or **“Always”** so that the system will know your time zone and keep accurate time. Declining will make the Dawn and Dusk feature inoperative.
- If asked to have access to photos and videos press **“Only When Using”** or **“Always”** so that the app will get future updates.
- Press the Select Device button to navigate to the Available Bluetooth Devices Screen.

This screen is used to select the Pynamite device the app will pair to.

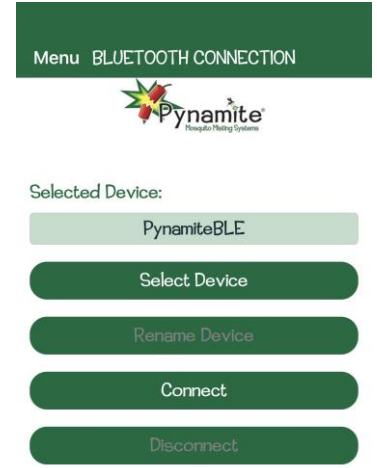
- Press on the available device to choose your system.

- Press Connect and settings will load.
- Enter the Pairing code when prompted. It is located on a sticker on the controller inside the Cube. (see #5 on page 2)
NOTE: Android phones may ask for a 4-digit PIN (1234 or 0000), input the 6 digit Pairing Code at this time.

NOTE: Several phones can be paired to the system at the same time.

Renaming the Device: Before pressing Connect, you can change the name of the Selected Device by pressing PynamiteBLE and typing in the desired name, then Press Rename Device. The system will be renamed on that user’s phone. This is helpful if you have more than one system.

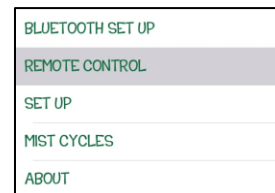
Disconnecting the Device: Press the Disconnect button to disconnect the app from the selected device. This button is disabled if no device is connected.



MENU SCREEN

Pressing on the Menu button (either ☰ or the word Menu) in the upper left-hand corner of the screen will open the menu on the left side of the screen. The screen that is currently displayed will be highlighted.

Pressing on any of the menu options will take the user to the selected screen.



REMOTE CONTROL SCREEN

This screen is used as a remote control by pressing the buttons on the left and for informational purposes through the boxes on the right.

REMOTE BUTTONS on the left

MIST BUTTON

Press the Mist button to begin a remote manual misting cycle. Remote misting cannot occur during manual misting or a scheduled automatic misting cycle.

NOTE: The app default is 0 nozzles, the system will not mist until the controller is paired with the app and the nozzle count is increased to at least 1 nozzle in the Set-Up screen.

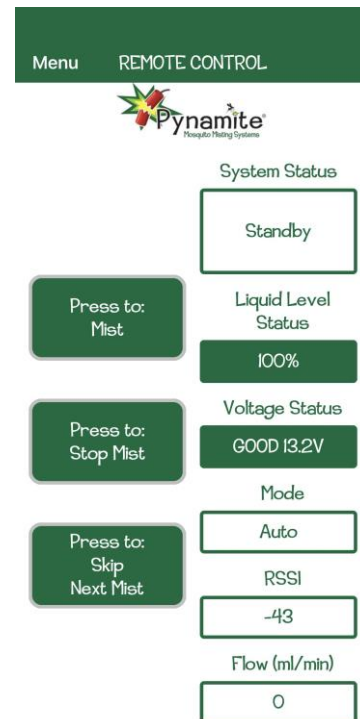
STOP MIST BUTTON

Press the Stop Mist button to terminate any misting cycle and stop other activities in progress.

SKIP NEXT MIST

Press the Skip Next Mist button to skip the next scheduled automatic mist cycle. The skip feature can be activated any time a scheduled automatic misting cycle is not active. Once a user has chosen to skip the next cycle, the button text will be changed to Unskip Next Mist and pressing it will cancel the request to skip the next auto mist cycle.

When this button is pressed, a confirmation pop-up will verify the Skip/Unskip request before sending the command to the Controller.



INFORMATION SCREENS on the right

SYSTEM STATUS: displays the current state of the misting system. The field will report one of the following states:

- **STANDBY** – controller is idle
- **AGITATE** – in agitation phase - a countdown will appear
- **MIST** – in misting phase - a countdown will appear
- **DUMP** – in dump phase
- **STIR** – performing a stir operation
- **MIST SAVER** – suspends misting if the temperature goes below 50F inside the Cube
- **LEAK** – leak has been detected - operates only if optional leak detection is installed on the system
- **SKIP** – skip mist cycle is pending



LIQUID LEVEL STATUS: displays the current % level of liquid in the tank. The background of the field will change color based on the % level

- Green – Level = 25% to 100%
- Yellow – Level = 11% to 24%
- Red – Level = 0% to 10%

NOTE: The system will not mist if the liquid level shows 0%. To reset Liquid level either 1) go into the Set Up screen in the App and reset the Liquid Level or 2) Press and HOLD the STOP button on the Bluetooth controller for 5 seconds. The MIST button LED will flash green 3 times. In either case the liquid level will be reset to 100%. Running the pump dry can damage the pump and void the warranty.

VOLTAGE STATUS: displays the current voltage level, Good 13.2.

NOTE: Low Voltage Detection should be turned ON in the Set Up screen when the system is connected to a 12v battery.

MODE STATUS: displays either Auto or Manual. The system must be in Auto mode for scheduled mists and stir operations to activate. Change the Mode in the Set Up screen.

RSSI STATUS: displays the current Bluetooth strength (RSSI = Received Signal Strength Indicator). The number is always negative. The smaller the negative number is, the stronger the signal is.

FLOW STATUS: displays the current flow in ml/min. Will only display if optional Flow Meter is installed.

SET UP SCREEN

This screen is used to configure the controller settings.

Select Choice: is used to select between Manual and Auto mode. Press Auto or Manual to move the mosquito icon to that Mode.

NOTE: System must be in Auto mode for scheduled mists and stir operations to activate.

Agitation: happens before every mist cycle. It is a good feature to turn On.

Stir: is additional agitation twice a day. Stir only operates on Auto mode.

Liquid Level Reset: resets the liquid level back to 100%. The Liquid Level is shown on the remote control screen. The system uses math to determine when it is time to refill, it does not have a liquid level sensor. When the system reaches 0% it will not mist until Liquid Level is reset. Reset the liquid level every time the tank is refilled.

NOTE: Do not allow the pump to run dry as this will void the warranty.

Zone 1 Settings: are used to configure the number of nozzles, the nozzle flow rate, and the tank size used in the system.

NOTE: The app default is 0 nozzles, the system will not mist until the controller is paired with the app and the nozzle count is increased to at least 1 nozzle on each active zone

- Number of Nozzles – Range: 0-60
- Nozzle Flow Rate – Range: 1-90 ml, typically leave as default
- Tank Size – Range: 1-250 gallons, typically leave as default

Zone 2 Setting: is used to configure the number of nozzles in Zone 2 if an optional Zone Kit was purchased with the system.

- Number of Nozzles – Range: 0-60 (at least 1 nozzle must be input for Zone 2 to mist)





Mist Days: are used to independently configure which days automatic misting should occur.

Remote Duration: is used to configure the duration of the mist cycle when triggered from a remote control or the MIST button on the Bluetooth controller. The range is 1-999 seconds.

Remote Counter: shows how many remote mist cycles have been initiated from the app and handheld remote transmitter. It will reset to 0 after 999.

Remote Reset: is used to reset the remote counter back to zero.

Mist Saver: suspends auto cycle misting when the temperature falls below 50F inside the Cube and will resume scheduled mist cycles when the temperature is above 50F inside the Cube. However, if the temp. falls to 32F for 5 minutes the system will go into sleep mode and power down. Pressing the POWER button will awaken the system.

Low Voltage Detection: should be turned ON if a battery is powering the system. See voltage status on page 5.

Dump: Relieves the pressure off the nozzles.

OPTIONS:

Learn Optional Transmitter: is used to reset or add a handheld remote control. Press the LEARN button, Press YES to confirm, and the word LEARN turns grey. Press the buttons on the handheld remote control for 10 seconds to complete the pairing. The word LEARN will turn white when paired.

Forget Optional Transmitter: is used to erase a handheld remote control.

Leak Detection: is currently unavailable.

Reset to Factory Defaults: is used to reset all settings on the controller to factory defaults.

MIST DAYS

SUNDAY

MONDAY

TUESDAY

WEDNESDAY

THURSDAY

FRIDAY

SATURDAY

REMOTE DURATION (sec)
(Default 45 sec)

REMOTE COUNTER

REMOTE RESET

MIST SAVER

LOW VOLTAGE DETECTION

DUMP (sec)
(Default 15 sec)

OPTIONS

LEARN OPTIONAL TRANSMITTER

FORGET OPTIONAL TRANSMITTER

LEAK DETECTION

LEAK ERROR %
(Default 20)

RESET TO FACTORY DEFAULTS

MIST CYCLES SCREEN

This screen is used to set the automated mist cycles. There are 24 independent cycles, displayed as 1 through 24. Cycles 1 and 2 are always listed as Dawn and Dusk and cannot be changed but can be toggled ON or OFF.

Cycles 1 & 2 - Dawn & Dusk: are a convenient way of not having to reset mist cycles with Daylight Saving Time.

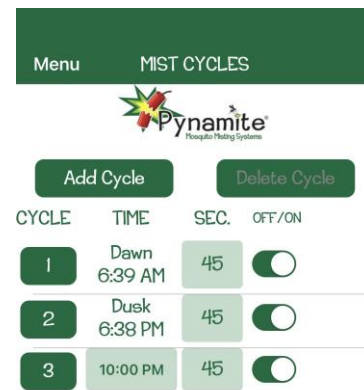
Add a Cycle Button: Pressing will add a new mist cycle row. The time will say "Set Time" until the user has selected a new time for the mist cycle.

Seconds Field: is used to configure the duration of the mist cycle. This field will default to 45 0-999 seconds.

On/Off Selector: is used to enable or disable that mist cycle.

Zone Field: is used to configure which zone is controlled by this cycle. The zone column is only displayed if the optional zone 2 is installed on the system. The choices are 1, 2 and Both.

Delete a Cycle: Pressing will delete the selected row from the list. The delete button will not be enabled unless a row has been selected. The Dawn and Dusk cycles cannot be deleted.



RECOMMENDED MIST TIMES

MOSQUITOES: 30-45 second mists at Dawn, Dusk and again about 10:00 pm

FLIES: 30-45 second mists at 8:00 am, 10:30 am, 1:00 pm, 3:30 pm, and 6:00 pm

NO-SEE-UMS: Add 15-30 second mists every 30-60 minutes from 3:00-7:00 pm

***It will take a couple days to get control of your yard initially and again sometimes after a big rain and breeding cycle. Use the remote control to mist in between scheduled mists.

ABOUT SCREEN

This screen is used to update firmware on the controller.

The system arrives with the latest update. However, if you want to check for an update, go to iPhone App or Android Play store. Type Pynamite Cube Bluetooth in the search bar. Press the mosquito icon (not the word open). If there is an update you will see the option to update, press it and wait for the app to update.

To update Firmware:

- Open the Pynamite app on your phone and connect to the device as instructed on page 2.
- Press MENU or ☰ then Press ABOUT
- Press the Update Firmware Button and then Press the PynamiteBLE.zip file. You will see a pop up.
- Press Download and the % bar will start increasing from 0%

The LEDs on the controller will turn blue during the download and change back to green when complete

NOTE: The paired phone MUST stay in range of the Bluetooth controller until the download has finished or the controller will lock up requiring a tech support call.



INSIDE THE CUBE

1. 12v Battery – system comes with an Ionic Blue Lithium battery. Download the Ionic Blue Batteries app from the App or Play store to connect and monitor the battery.
2. WIRE RECESS – bring the solar panel cord in through the wire recess from the back of the Cube.

3. 2-PIN CONNECTORS – attach the 2-pin connector from the solar panel to the 2-pin connector from the battery wire harness.

4. CONTROLLER – see operating instructions on previous pages.

5. AGITATION/ ANIT-SIPHON VALVE – agitates liquid inside the cube prior to every mist to keep the contents in suspension and stops siphoning if the tubing gets cut.

6. NOZZLE CIRCUIT ELBOW – the beginning of the nozzle circuit. Bring the tubing in through the nozzle circuit outlet (#8), insert the tube into the nozzle circuit elbow. **NOTE: To insert the tubing correctly, first make a clean straight cut with the tube cutter, then moisten the tubing and push it all the way in and then swiftly pull back to lock the tubing in place.**

7. PRESSURE RELIEF TUBE & JET NOZZLE – used to relieve the excess fluid from the pump and to relieve the pressure from the nozzle circuit at the end of a mist cycle. **NOTE: DO NOT remove the jet nozzle from the tube inside the tank.**

8. NOZZLE CIRCUIT OUTLETS – outlets (holes) on both the back right and left sides of the Cube to allow the nozzle circuit to go in either direction. It may be easier to feed the tubing in through the nozzle circuit outlet from outside the Cube before attaching it to the nozzle circuit elbow.

9. SUCTION STRAINER – catches particulates/debris from the tank before they enter the pump and nozzle circuit. Helps keep the nozzles from getting clogged. It serves as an excellent visual to determine if the strainer is clogged and needs to be cleaned. See more about the Suction Strainer on page 15.

10. PUMP AND MOTOR – can mist up to 60 nozzles.

11. 8" MANWAY – used to access inside the Cube for filling, maintenance, and winterization.

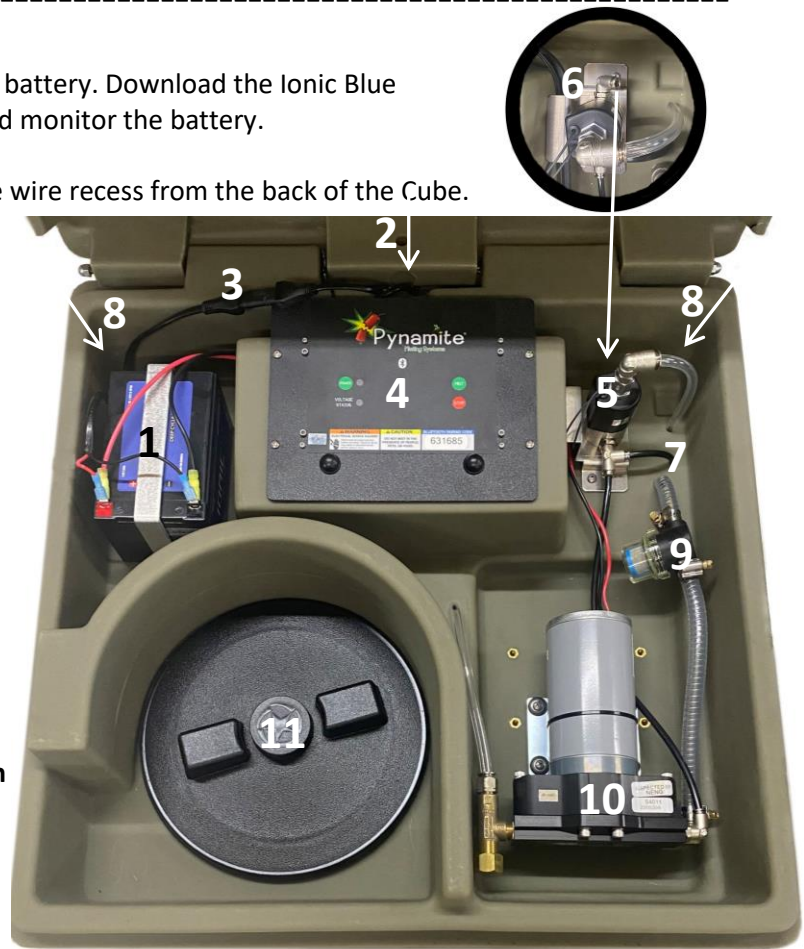
NOTE: Never operate the system with the manway open.

NOT PICTURED

Outside the Cube

RECESSED DRAIN – located on the bottom right side of the Cube.

NOTE: The Pynamite Cube is shipped with the drain cap removed. Make sure viton o-ring is in place and hand-tighten before adding liquid.





Inside the Cube

- EDUCTOR TUBE – attached to the agitation, anti-siphon valve (#3)
- SUCTION STRAINER TUBE – attached to the suction strainer (#7), draws liquid from the Cube into the pump and out through the nozzle circuit.

SYSTEM SET UP

Once the nozzle circuit has been installed and connected to the Cube, the system needs to be purged and tested before filling it with insecticide.

- Fill the Cube about halfway with water. **DO NOT ADD INSECTICIDE. DO NOT GET THE CONTROLLER WET.**
- Remove the last nozzle on the circuit (or nozzles if you have different runs).
- **CLOSE the Manway Cover** and initiate an Inspect cycle by pressing and HOLDING the Mist button for 5 seconds **then release**, to purge the air out of the system. **NOTE: The system will not mist with the remote or a quick touch on the Mist button until the controller is paired with the app and the nozzle count is set to at least 1 in the Set Up screen.**
- After the agitation cycle, the system will start misting. **Verify there are no leaks inside the Cube before walking away.** Water and air will come out of the open nozzle(s). Initiate several Inspect cycles to purge the air out of the lines until the water runs freely without sputtering.
- Once the water is running without air sputtering and the inspect cycles ends, replace the nozzle tip(s).
- Attach the pressure tester along the nozzle circuit to test the system pressure. Refer to pressure tester instructions on the next page.
- Press and hold the Mist button for 5 seconds. Once misting, if the pressure does not reach about 150 psi, check tubing connections making sure water is not leaking out or air is not being sucked in. **NOTE: Tubing must have a fresh straight cut and is pushed in and swiftly pulled back to lock in place.**
- Once the pressure is verified, remove the pressure tester and reattach the nozzle(s).
- Pour in the insecticide and continue filling the Cube with water. **NOTE: DO NOT OVERFILL THE CUBE, WATER CAN DAMAGE THE ELECTRONICS AND PUMP AND MOTOR.**

WARNINGS:

DO NOT LEAVE THE SYSEM UNATTENDED WHILE FILLING
DO NOT LET THE HOSE COME IN CONTACT WITH SOLUTION IN THE TANK
UNPLUG THE SYSTEM WHILE SERVICING

NOTE: When the Cube is full, you may notice a slight bulge. This is common with rectangular tanks and is not a functional concern.

ATTACHING THE DRAIN CAP

Make sure the viton o-ring is in place and hand-tighten the drain cap on to the drain, back right hand corner of the cube, before filling the cube.



USING THE PRESSURE TESTER TOOL

The Pressure Tester is a tool to check the pressure at the system and anywhere along the nozzle circuit.

NOTE: The pressure tester is partially filled with liquid.

To test the pressure at the system, remove the nozzle or fitting closest to the system by holding down the collet on the fitting and pulling the tubing out. Insert the tubing attached to the pressure tester into the fitting. Be sure to isolate the fitting with the pressure tester attached so that pressure is not being diverted through the nozzle circuit. This can be done by inserting a plug in the open port of a tee. The pressure tester will read the pressure of the system.



The pressure tester can also be used along the nozzle circuit to check for leaks. To attach the pressure tester to the nozzle circuit, remove a nozzle and adapter from the fitting and insert the tubing attached to the pressure tester into the fitting that was holding the nozzle and adapter.

NOTE: The pressure tester should NOT remain attached during regular operation. Store the pressure tester out of freezing temperatures to use again when needed.

REMOTE CONTROL

MIST Button - will initiate an unscheduled agitate/mist cycle.

NOTE: Mist will start after the pre-set agitation runs.

STOP MIST Button - will stop a mist once it starts.

SKIP MIST Button - will skip the next scheduled mist. Pressing it again will cancel the request to skip the next mist cycle. This will be displayed in the System Status window in the app remote control.

NOTE: The LED on the remote control will flash to confirm communication.



SUCTION STRAINER CLEANING

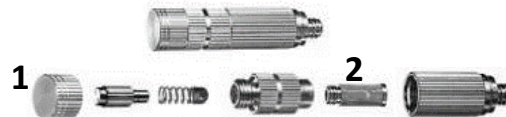
The suction strainer can be cleaned by pulling some of the suction hose out of the hole to allow the suction strainer to be moved outside of the Cube. Open the clear bowl outside the Cube so liquid does not go inside the Cube and remove the mesh filter. Rinse the filter and nylon bowl after every couple of refills.

NOTE: Do not allow water to remain in the clear plastic bowl of the suction strainer during a freeze. Freezing water will crack the nylon bowl.



NOZZLES

Pynamite Nozzles are fully cleanable. The tip (1) can be unscrewed and soaked in a vinegar, warm water solution to remove calcium deposits. The nozzle also contains a cleanable mesh filter (2) in the rear of the nozzle. Unscrew the back of the nozzle to locate the filter, remove and rinse the filter with fresh water to remove any debris. Hand tighten to reassemble.



NOTE: For optimum performance, nozzles should be checked and cleaned several times a year.

BATTERY CHARGER

If the system has a 12v Lithium battery and the battery voltage drops to 0%, the battery can be recovered by using the included charger.

- Remove the negative then the positive yellow spade connectors from the battery.
- Plug the charger into a standard 120v outlet.
- Confirm the charger is in Lithium mode (not Lead Acid mode).
- Connect the alligator clips from the charger to the positive then negative F2 connectors on the battery.
- Battery should be fully charged within 2-4 hours.
- Unplug the charger from the outlet.
- Disconnect the negative then positive alligator clips from the F2 connectors on the battery.
- Reattach the yellow spade connects to the battery, positive first then negative.

NOTE: The charger is intended to recover the battery only and is not for use to power the system.

INSECTICIDES REGISTERED FOR MISTING

Only products that are water based, approved by the EPA and labeled for use in an Automated Misting System can be used in a Pynamite Misting System. **Products containing Petroleum Distillates should never be used regardless of labeling. Additionally, do not use Natural Products containing essential oils such as wintergreen, peppermint and similar. Using unauthorized products can damage your system as well as your property and will void the warranty.** To see approved Misting Concentrates, go to www.mosquitoesinthemist.com and click on the Misting Solutions tab.

Never mix different misting concentrates inside the Cube. Always thoroughly clean out the tank and run a couple freshwater manual mists before you change products. Perform this clean out procedure after every 2-3 refills to keep the Cube tank clean and algae/bacteria free.



WINTERIZING

Plan for the Cube tank to be close to empty as the winter season commences. The Cube should be emptied during winter. Be sure to dispose of any remaining liquid properly according to the instructions on the label of your misting concentrate.

Flush pump and agitation valve with clean water:

- Turn the system OFF and open the drain cap on the bottom right side of the Cube to drain.
- Open the manway cover (#9) to rinse inside the Cube with fresh water, replace the drain cap.
NOTE: Do not get the electronics wet.
- Thoroughly rinse the suction and agitation lines inside the Cube with fresh water.
- Fill a few inches of water back into the Cube, **make sure the water covers the entire end of the suction hose and CLOSE THE MANWAY COVER. Never operate with the manway open.**
- Turn the system ON and initiate an Inspect cycle by pressing and HOLDING the Mist button for 5 seconds and **then releasing**. The agitation cycle will flush the agitation valve and the mist cycle will flush the pump.
- Open the drain cap and empty the Cube and then activate a dry manual mist cycle by pressing the Mist button or using the remote control to clear the water from agitation valve and pump. Replace the drain cap.
- **Do not allow water to remain in the clear bowl of the suction strainer (#7). Freezing water will crack the bowl.** Remove and store the clear bowl over the winter to prevent it from cracking.
- Turn the system OFF.

Purge fluid remaining in the Nozzle Circuit with compressed air.

- Remove the nozzle tip from the straight or 45 ° Adapter on the end of each run.
- Using a portable air compressor and winterizing fitting (can be purchased from Pynamite www.mosquitoesinthemist.com, click the Fitting & More tab) purge fluid from nozzle circuit by connecting the air compressor to the tubing at the beginning of the nozzle circuit.
- Once the fluid has been purged from the lines, replace the nozzle(s).

OR in areas that do not have a long hard freeze

Remove the nozzle tip from the straight or 45 ° adapter on the end of each run and leave them off through the winter to allow liquid to drain out.

NOTE: Winterizing is a great time to check and clean the nozzles. For optimum performance, nozzles should be checked and cleaned several times a year. See nozzle cleaning instructions on page 11.

NOTE: If you live in an area that does not freeze and you do not plan on performing a complete winterization process, the Cube should either be emptied, cleaned, and turned OFF or kept agitating and running throughout the winter. If the liquid sits stagnate over several months, slime and bacteria will naturally grow in the tank. When the system starts up again, that slime will be drawn up into the suction filter, though the pump and out through the nozzle circuit causing clogging and possible damage.

NOTE: An overnight freeze can cause liquid in the pump and motor to freeze. If the system initiates a scheduled mist while the pump is frozen, the pump, motor and controller can be damaged. These damages are not covered under the warranty.



WARRANTY

Lovett Industries, LLC dba Pynamite warrants this Product, to be free from defects in material and workmanship as follows:

- For a period of one (1) year from the date of purchase (whether or not actual use begins on that date), Pynamite will repair or replace defective electronic parts with new or refurbished parts, at its option, at no charge. This warranty does not include labor or other costs incurred for diagnosing, removing, installing, shipping, servicing, or handling of either defective parts or replacement parts. Cube Pro systems are intended for use bin the US. No exceptions will be made for systems outside the US. Additionally, warranty does not apply to Nozzles, Tubing, or Fittings.
- This warranty applies solely to equipment supplied by Pynamite and is in lieu of all other warranties, expressed or implied. No person, agent, dealer, or distributor is authorized or empowered to give any other warranty or to assume any other liability on behalf of Pynamite.

Warranty Conditions:

- This warranty is extended only to the original Purchaser and is nontransferable.
- A purchase receipt or other proof of date of purchase will be required before warranty service is rendered.
- Installation, use, care and maintenance must be normal and in accordance with instructions contained in the operating manual and Pynamite's service information. Failure to do so shall void this warranty.
- All claims for failure to conform to specifications or defects in material or workmanship under this warranty must be made promptly after discovery and, in any event, must be received by Pynamite not more than one year after the original purchase date.
- Pynamite reserves the right to inspect the equipment prior to any decision involving a warranty claim.
- Pynamite reserves the right to make warranted repairs at either the installed site or at Pynamite's location in Navasota, TX. If Pynamite opts for repair at its own location, Purchaser is responsible for shipping the item to Pynamite at its expense.

Manufacturer's obligation under the warranty shall not apply to:

- Any equipment, which has been damaged by negligence, misuse, abuse, neglect and/or improper adjustment, water damage on electronics, misting products not labeled for misting systems or that contain Petroleum Distillates, accident, vandalism, acts of God, acts of war, whether declared or undeclared, improper application, or any other contingency beyond the control of Pynamite.
- Cosmetic damage
- Damage in transit
- Failures caused by products not supplied by Pynamite
- Failures, which result from faulty installation, set-up adjustments, improper operation, power line surge, improper voltage supply or damage from lightning
- Any equipment that has been repaired or altered without authorization from Pynamite or in a manner inconsistent with such authorization
- Normal wear on any item or piece of equipment
- Lost items

866-986-5586
info@pynamite.net
www.pynamite.net

Shop our Online Store
www.mosquitoesinthemist.com